

Newton BaseDrain

Drainage for the Newton CDM System

Revision 5.6 - 13th April 2023

INTRODUCTION

[Newton BaseDrain](#) is the drainage system used most commonly within the [Newton CDM](#), 'Type C', cavity drain waterproofing system.

The drainage system comprises of a range of products that collectively receive water ingressing at weaknesses within the structure and then discharge the collected water to a Newton Sump System or safe drainage (drainage that is below the level of the basement floor that cannot back-up or block):

Newton BaseDrain - Drainage conduit for the perimeter of the area to be waterproofed, that is situated at the base of the wall membrane

Newton FloorDrain - Drainage conduit for collection of water at the construction joint to the floor and to replace BaseDrain at door thresholds. FloorDrain is also used to connect the perimeter BaseDrain to the sump

BaseDrain Corner - Formed 90 degree corner

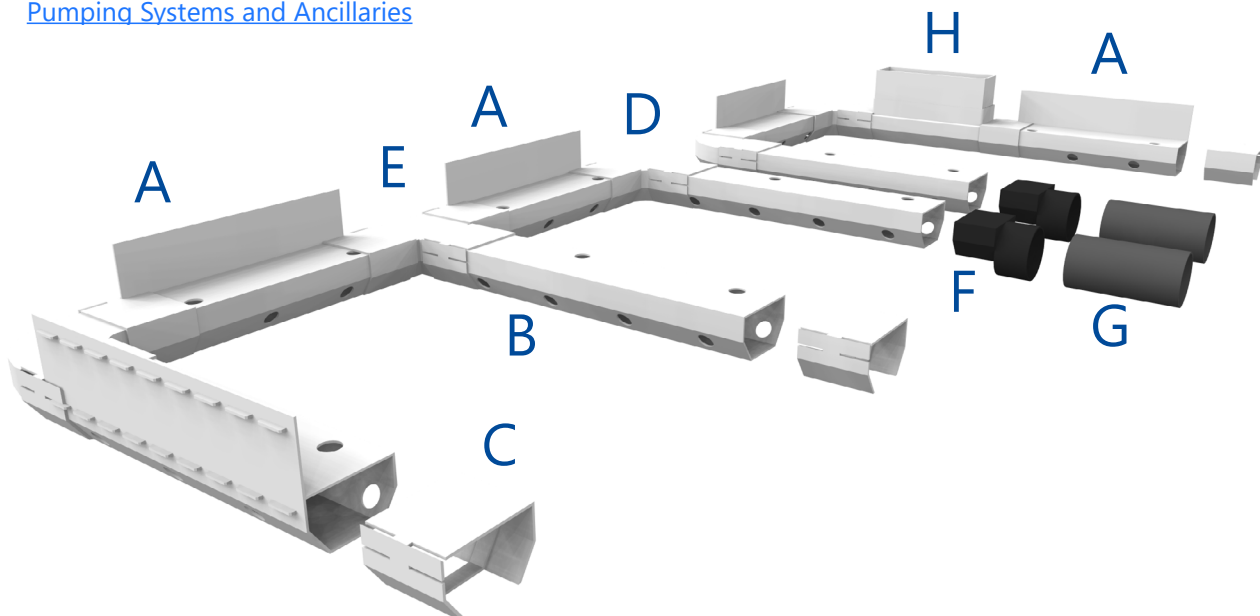
BaseDrain Connector - For connecting BaseDrain pieces.

BaseDrain T-Piece - Formed T for a 90 degree connection to the FloorDrain from the BaseDrain

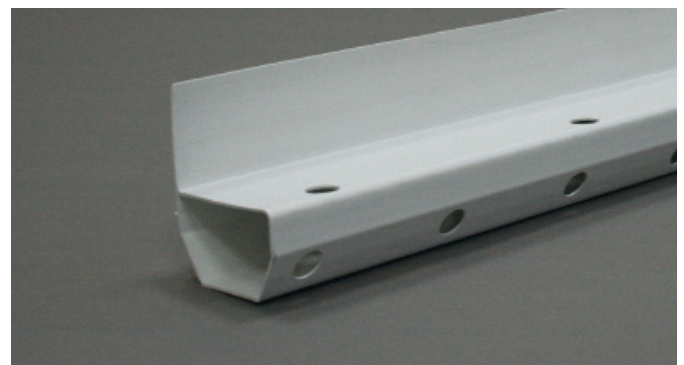
Inspection Port Pack - For inspection and maintenance access to the drainage system

ASSOCIATED PRODUCTS

- [Cavity drain wall and floor membranes](#)
- [Pumping Systems and Ancillaries](#)



- A. Newton BaseDrain - Product Code D1
- B. Newton FloorDrain - Product Code D3
- C. Newton BaseDrain Connector - Product Code D4
- D. Newton BaseDrain Corner - Product Code D6
- E. Newton BaseDrain T Piece - Product Code D7
- F. Newton BaseDrain Adaptor - Product Code D24
- G. 63mm Pipe to connect Drainage Adaptor to Sump or drainage - See price list for pipe codes
- H. BaseDrain Inspection Port Pack - Product Code D26



Newton BaseDrain

Drainage for the Newton CDM System

TECHNICAL DATA		
Features	Result	Units
BaseDrain		
Width - main body	77	mm
Width - including spacers	84	mm
Height - main body	50	mm
Height - including up-stand	108	mm
Length	2000	mm
Colour	White	
Material	PVC	
Spacer lug depth	3	mm
Unit of sale	Pack of six lengths	
FloorDrain		
H - W - L	50 - 84 - 2000	mm
Unit of sale	Pack of six lengths	
BaseDrain Corner		
H - W - L	50 - 115 - 115	mm
BaseDrain 'T' Piece		
H - W - L	50 - 115 - 115	mm

SPECIFICATION

Newton Waterproofing Systems work in partnership with RIBA NBS who publish our products on [NBS Source](#). The platform integrates seamlessly into project workflows, providing all product data from Newton's NBS BIM Objects, NBS Plus Clauses and RIBA Product Selector into one single source of product information.

NBS Source also hosts a large selection of Newton [case studies](#), as well as product [literature and certifications](#).

A wide range of drawings are available [on our website](#).

HEALTH & SAFETY

Newton BaseDrain should only be used as directed within this Data Sheet. There is no legal requirement for a Safety Data Sheet (SDS) for this product. PPE should be worn at all times when working on building sites including eye protection when drilling or fixing. Safety procedures should be adhered to when working at height and working within excavations for your personal protection.

Newton Waterproofing Systems reserve the right to update product literature at any time. Please always refer to our [website](#) for the latest versions.