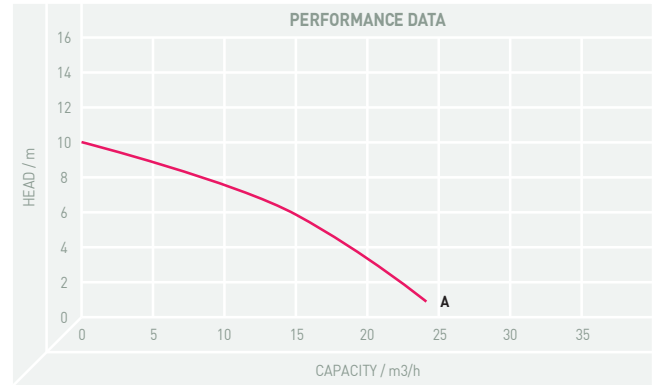


## Goliath 550 - Automatic Sump Pump

The Goliath Super® is a robust sump pump made of stainless steel plate and fibre-reinforced plastic, resistant to corrosion. It also features a vortex impeller giving up to 35mm solids handling. Maximum depth of submersion is 10m, minimum sump 250mm x 250mm.

### Features:

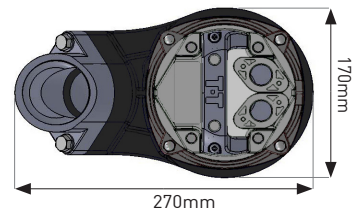
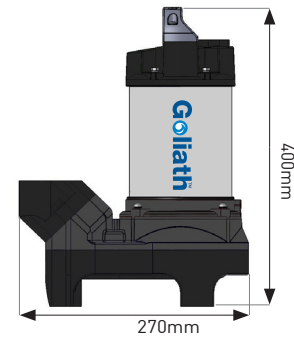
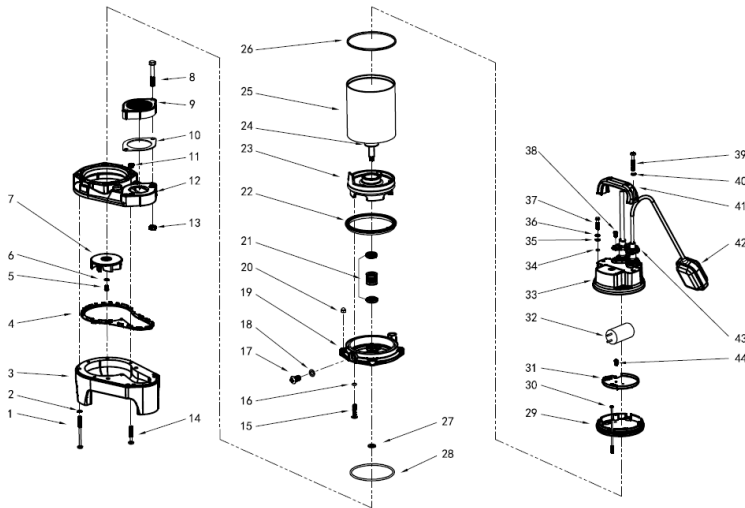
- Cast iron volute and impeller
- Double mechanical seal
- Interchangeable horizontal and vertical discharge
- Built in air relief valve on all models
- Automatic as standard but can be converted to manual upon request (except 400V)



## TECHNICAL SPECIFICATION

| PUMP TYPE              | PRODUCT CODE    | CURVE | OUTPUT |     | DISCHARGE |      | MAXIMUM |              | FREE PASSAGE mm | CABLE | WEIGHT kg |
|------------------------|-----------------|-------|--------|-----|-----------|------|---------|--------------|-----------------|-------|-----------|
|                        |                 |       | kW     | AMP | mm        | inch | HEAD M  | CAPACITY LPM |                 |       |           |
| Goliath Super 550 230V | PM/GOLIATH4/1-A | A \   | 0.55   | 3.6 | 50        | 2    | 10      | 433          | 35              | 5     | 15.8      |
| Goliath Super 550 400V | PM/GOLIATH4/2   | A \   | 0.55   | 1.6 | 50        | 2    | 10      | 433          | 35              | 5     | 16.3      |

## PARTS LIST AND DIMENSIONS



| No. | PART           | QTY | No. | PART            | QTY | No. | PART              | QTY | No. | PART              | QTY |
|-----|----------------|-----|-----|-----------------|-----|-----|-------------------|-----|-----|-------------------|-----|
| 1   | Screw          | 4   | 12  | Casing          | 1   | 23  | Lower Motor Cover | 1   | 34  | O Ring            | 4   |
| 2   | Washer         | 4   | 13  | Nut             | 2   | 24  | Bearing           | 2   | 35  | Washer            | 4   |
| 3   | Casing Lower   | 1   | 14  | Screw           | 2   | 25  | Motor             | 1   | 36  | Spring Washer     | 4   |
| 4   | Casing Seal    | 1   | 15  | Screw           | 4   | 26  | Upper Motor Seal  | 1   | 37  | Hex Bolt          | 4   |
| 5   | Screw          | 1   | 16  | O Ring          | 4   | 27  | Oil Plug Seal     | 1   | 38  | Screw             | 4   |
| 6   | Washer         | 1   | 17  | Screw           | 1   | 28  | O Ring            | 1   | 39  | Screw             | 2   |
| 7   | Impeller       | 1   | 18  | Seal Washer     | 1   | 29  | Upper Motor Cover | 1   | 40  | O Ring            | 2   |
| 8   | Screw          | 2   | 19  | Oil Casing      | 1   | 30  | Screw             | 1   | 41  | Handle            | 1   |
| 9   | Screwed Flange | 1   | 20  | Cap Nut         | 4   | 31  | Capacitor Spacer  | 1   | 42  | Float Switch      | 1   |
| 10  | Flange Seal    | 1   | 21  | Mechanical Seal | 1   | 32  | Capacitor         | 1   | 43  | Cable Gland Cover | 2   |
| 11  | Nut            | 2   | 22  | Lower Seal Ring | 1   | 33  | Capacitor Cover   | 1   | 44  | Screw             | 1   |